

jura®



IMPRESSA A9 One Touch – Quick Reference Guide

IMPRESSA A9 One Touch – Quick Reference Guide



These short instructions do not replace the 'Instructions for use for IMPRESSA A9 One Touch'. Make sure you read and observe the safety information and warnings first in order to avoid hazards.

Rinsing the machine

You can initiate the rinse operation manually at any time.

Precondition: The start screen is displayed.

- ▶ Place a receptacle under the dual spout.



- ▶ Touch '☼'.
- ▶ Touch 'Rinse the coffee system'.
'Machine is rinsing', water flows out of the dual spout.
The rinse stops automatically. Your IMPRESSA is once more ready for use.

Rinsing the milk system

After milk preparation, the IMPRESSA prompts you to rinse the milk system.

Precondition: 'Rinse the milk system' is displayed.

- ▶ Place a receptacle under the dual spout.



- ▶ Touch 'Rinse the milk system'.
'Milk system is being rinsed', water flows out of the dual spout.
The rinse stops automatically. Your IMPRESSA is once more ready for use.

Cleaning the milk system

To ensure that the milk system in the dual spout always works properly, you must clean it **daily** when you have been preparing milk.


CAUTION

If the wrong cleaning agent is used, the machine could be damaged and/or traces could be left behind in the water.

- ▶ Use only original JURA maintenance products.

i JURA milk system cleaner is available from specialised dealers.

Precondition: The start screen is displayed.

- ▶ Touch the Menu symbol  for **about 2 seconds**.
- ▶ Touch 'Clean the milk system'.
'Clean the milk system'
- ▶ Touch 'Start'.
- ▶ Touch 'Start' again.
'Milk system cleaner'

- ▶ Pour 250 ml of fresh water into a receptacle and add one capful of milk system cleaner.
- ▶ Immerse the milk pipe in the receptacle.
- ▶ Place another receptacle under the dual spout.



- ▶ Touch 'Next'.
'Cleaning milk system', the dual spout and the pipe are cleaned.
'Fresh water'
- ▶ Rinse the receptacle thoroughly, fill it with 250 ml of fresh water and immerse the milk pipe in the water.
- ▶ Empty the other receptacle and place it under the dual spout again.

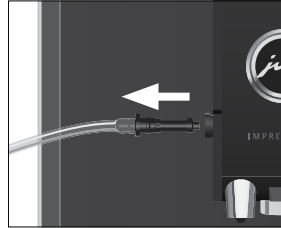


- ▶ Touch 'Next'.
'Cleaning milk system', the dual spout and the pipe are rinsed with fresh water. The operation stops automatically. 'Milk system cleaning complete' appears briefly on the display. Your IMPRESSA is once more ready for use.

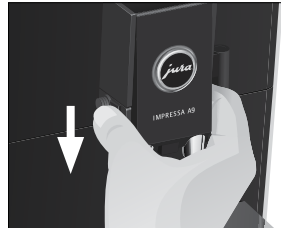
Dismantling and rinsing the dual spout

The dual spout must be dismantled and rinsed **daily** if milk has been prepared to make sure it functions perfectly and also in the interests of hygiene.

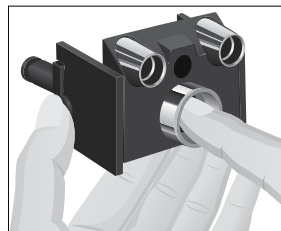
- ▶ Remove the milk pipe and rinse it thoroughly under running water.



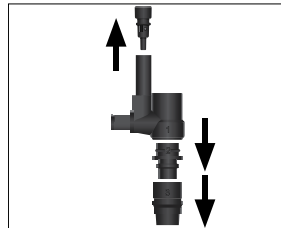
- ▶ Press the releasing devices and pull the dual spout down and off.



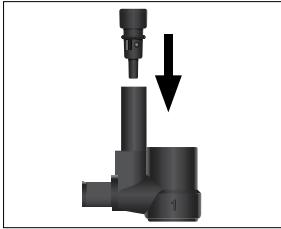
- ▶ Press the milk system down and take it out.



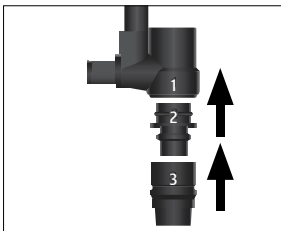
- ▶ Dismantle the milk system into its individual parts.



- ▶ Rinse all the parts under running water. If there are severely dried-on milk residues, firstly immerse the individual parts in a solution of 250 ml cold water and 1 capful of JURA milk system cleaner. Then rinse the parts thoroughly.
- ▶ Fit the air intake pipe.



- ▶ Reassemble the milk system. When doing this, note the numbering of the individual parts.



- ▶ Fit the assembled individual parts back in the dual spout and press it firmly.
- ▶ Fit the dual spout on the machine. It will click into place audibly.




Inserting and activating the filter

Your IMPRESSA no longer has to be descaled if you are using the CLARIS Blue filter cartridge. If the water hardness is 10 °dH or more, we recommend using the filter cartridge. If you do not know the hardness of your water, you can find this out first (see Chapter 1 ‘Preparing and using for the first time – Determining the water hardness’).

If you did not activate the filter cartridge the first time you used the machine, you can do this now as follows.

- i** Perform the ‘inserting the filter’ operation without any interruptions. This will ensure that your IMPRESSA always produces its best.

Precondition: The start screen is displayed.

- ▶ Touch the Menu symbol  for **about 2 seconds**.
- ▶ Touch ‘>’ (bottom right) several times until the programme item ‘3/4’ is displayed.
- ▶ Touch ‘Use filter’.
- ▶ Touch ‘Active’.
- ▶ Touch ‘Save’.
- ▶ ‘Saved’ appears briefly on the display.
- ▶ ‘Insert filter’
- ▶ Remove the water tank.
- ▶ Open the filter holder and insert the filter cartridge into the water tank, exerting slight pressure.



- ▶ Close the filter holder. It will click into place audibly.

- i** After two months, the filter will cease to work. Set the date on the date plate on the filter holder in the water tank.
- ▶ Fill the water tank with fresh, cold water and reinsert the tank.
- ▶ Place a receptacle (at least 300 ml) under the hot-water spout.



- ▶ Touch 'Next'.
'Filter is being rinsed', water flows out of the hot-water spout.

- i** The water may be slightly discoloured. This is not harmful to health and does not affect the taste.


Rinsing of the filter stops automatically after approximately 300 ml.

'Machine is heating'

Your IMPRESSA is once more ready for use.

Changing the filter

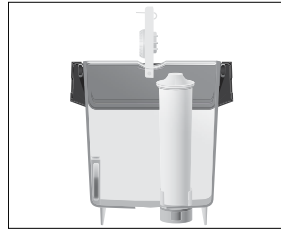
- i** After 50 litres of water have flowed through, the filter will cease to work. Your IMPRESSA will automatically prompt you to change the filter.
- i** After two months, the filter will cease to work. Set the date on the date plate on the filter holder in the water tank.
- i** If the CLARIS Blue filter cartridge is not activated in programming mode, you will not be prompted to change the filter.

Precondition: The start screen is displayed. The box with the Maintenance symbol  lights up red.

- ▶ Touch .
- ▶ Touch 'Change the filter'.
'Change the filter'

- i** If you do not want to start changing the filter just yet, press the 'L' button.

- ▶ Touch 'Start'.
- ▶ Touch 'Start' again.
'Change the filter'
- ▶ Remove and empty the water tank.
- ▶ Open the filter holder and remove the old CLARIS Blue filter cartridge.
- ▶ Insert a **new** CLARIS filter cartridge Blue into the water tank, exerting slight pressure.



- ▶ Close the filter holder. It will click into place audibly.

- i** After two months, the filter will cease to work. Set the date on the date plate on the filter holder in the water tank.

- ▶ Fill the water tank with fresh, cold water and reinsert the tank.
- ▶ Place a receptacle (at least 300 ml) under the hot-water spout.



- ▶ Touch 'Next'.
'Filter is being rinsed', water flows out of the hot-water spout.

- i** The water may be slightly discoloured. This is not harmful to health and does not affect the taste.

Rinsing of the filter stops automatically after approximately 300 ml.

‘Machine is heating’

Your IMPRESSA is once more ready for use.

Cleaning the machine


After 180 preparations or 80 switch-on rinses, the IMPRESSA will prompt you to clean it.


CAUTION

If the wrong cleaning agent is used, the machine could be damaged and/or traces could be left behind in the water.


- ▶ Use only original JURA maintenance products.

- i** The cleaning programme lasts approximately 20 minutes.
- i** Do not interrupt the cleaning programme. The quality of cleaning will be impaired if you do so.
- i** JURA cleaning tablets are available from specialised dealers.

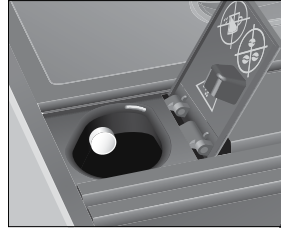
Precondition: The start screen is displayed. The box with the Maintenance symbol  lights up red.


- ▶ Touch .
- ▶ Touch **‘Clean’**.
- ‘Clean’**

- i** If you do not want to start cleaning just yet, press the **‘↑’** button.

- ▶ Touch **‘Start’**.
- ▶ Touch **‘Start’** again.
- ‘Empty grounds’**
- ▶ Empty the drip tray and coffee grounds container and put them back into the machine.
- ‘Press the menu button’**
- ▶ Touch the Menu symbol .
- ‘Machine is being cleaned’**
- The operation is interrupted, **‘Add cleaning tablet’**.

- ▶ Open the cover of the filler funnel for ground coffee.
- ▶ Insert a JURA cleaning tablet into the filler funnel.



- ▶ Close the cover of the filler funnel.
- ‘Press the menu button’**
- ▶ Touch the Menu symbol .
- ‘Machine is being cleaned’**
- ‘Empty grounds’**
- ▶ Empty the drip tray and coffee grounds container and put them back into the machine.
- Cleaning is now complete. Your IMPRESSA is once more ready for use.

Descaling the machine

The IMPRESSA builds up deposits of limescale over time and automatically prompts you to descale it when necessary. The degree of calcification depends on the hardness of your water.

CAUTION

If the descaling agent comes into contact with the skin or eyes, this can cause irritation.

- ▶ Avoid contact with the skin or eyes.
- ▶ Rinse off the descaling agent with clean water. Should you get any descaling agent in your eye, see a doctor.

CAUTION

If the wrong descaling agent is used, the machine could be damaged and/or traces could be left behind in the water.

- ▶ Use only original JURA maintenance products.

CAUTION

If the descaling operation is interrupted, there may be damage to the machine.

- ▶ Allow the descaling programme to run to the end.

CAUTION

If the descaling agent comes into contact with sensitive surfaces (e.g. marble), damage cannot be ruled out.

- ▶ Clean up any splashes immediately.

- i** The descaling programme lasts approximately 45 minutes.
- i** JURA descaling tablets are available from specialised dealers.
- i** If you use a CLARIS Blue filter cartridge and this is activated, you will not be prompted to descale.

Precondition: The start screen is displayed. The box with the Maintenance symbol ☼ lights up red.

- ▶ Touch '☼'.
- ▶ Touch 'Descale'.
- ▶ 'Descale'

i If you do not want to start descaling just yet, press the '⏪' button.

- ▶ Touch 'Start'.
- ▶ Touch 'Start' again.
- ▶ 'Empty drip tray'
- ▶ Empty the drip tray and coffee grounds container and put them back into the machine.
- ▶ 'Agent in tank'
- ▶ Place a receptacle under the hot-water spout.



- ▶ Remove and empty the water tank.
- ▶ Completely dissolve 3 JURA descaling tablets in a receptacle holding 500 ml of water. This may take several minutes.




- ▶ Pour the solution into the empty water tank and insert it into the machine.
- ▶ 'Press the menu button'
- ▶ Touch the Menu symbol ☼.
- ▶ 'Machine is being descaled', water flows out of the hot-water nozzle repeatedly. The operation is interrupted, 'Empty drip tray'.
- ▶ Empty the receptacle.
- ▶ Empty the drip tray and coffee grounds container and put them back into the machine.
- ▶ 'Fill water tank'
- ▶ Place a receptacle under the dual spout and the hot-water spout.



- ▶ Remove the water tank and rinse it thoroughly.
- ▶ Fill the water tank with fresh, cold water and reinsert the tank.
- ▶ 'Press the menu button'

IMPRESSA A9 One Touch – Quick Reference Guide

- ▶ Touch the Menu symbol .
 - 'Machine is being descaled', water flows out of the dual and hot-water spout.
 - 'Machine is rinsing', water flows out of the dual spout.
 - The operation stops automatically, 'Empty drip tray'.
- ▶ Empty the drip tray and coffee grounds container and put them back into the machine.
 - Descaling is now complete. Your IMPRESSA is once more ready for use.
- i** If the descaling operation stops unexpectedly, rinse the water tank thoroughly.